

DEKO MV

## PANEL WALL WITH INDIVIDUAL STACKING OF SECTIONS

Flexibility is the hallmark of all our products. DEKO MV is the perfect panel wall for dividing areas where there is a requirement for flexibility and stacking the panels in a variety of ways. Individual sections are operated separately, providing many storage options, including niches or separate rooms.

DEKO MV is the optimal solution where high sound reduction, fire safety and large-scale partitions are called for. The flexible size, look and number of modules in the panel wall are customised for each project, so the panel wall comes across as an integral part of the rest of the interior.

60 dB\*

SOUND  
\*up to

EI 60\*

FIRE  
\*up to

85-120mm

THICKNESS





## PROPERTIES

- The number and size of the modules are customised for each project
- Many options for discreet stacking
- Easily wipeable surfaces
- Individual surface finish
- Fire tested up to EI 60
- Option of incorporating doors in one or more sections
- Sound tested
- Several types of glazed panels
- Low weight
- Thin panels
- Manual operation
- Semi-automatic closure
- Fully automatic control
- Height up to 14.5m

We also offer other solutions and models including double glazed panel walls with high sound reduction and fully automatic control. For more information, contact DEKO.



**PANEL WALL**

# A flexible solution that complies with both sound and fire requirements

The panel wall is constructed around a specially designed structure of aluminium, environmentally friendly timber panels and insulation, which, combined with the mechanical seal where the panels meet the top track and floor, make it possible to achieve sound reduction of up to 60 dB. The panel wall is also available fire rated as EI 30 and EI 60.

**DISCREET STACKING**

A continuous track system is produced individually for each project, enabling the panel wall to be stacked as required.

x

x

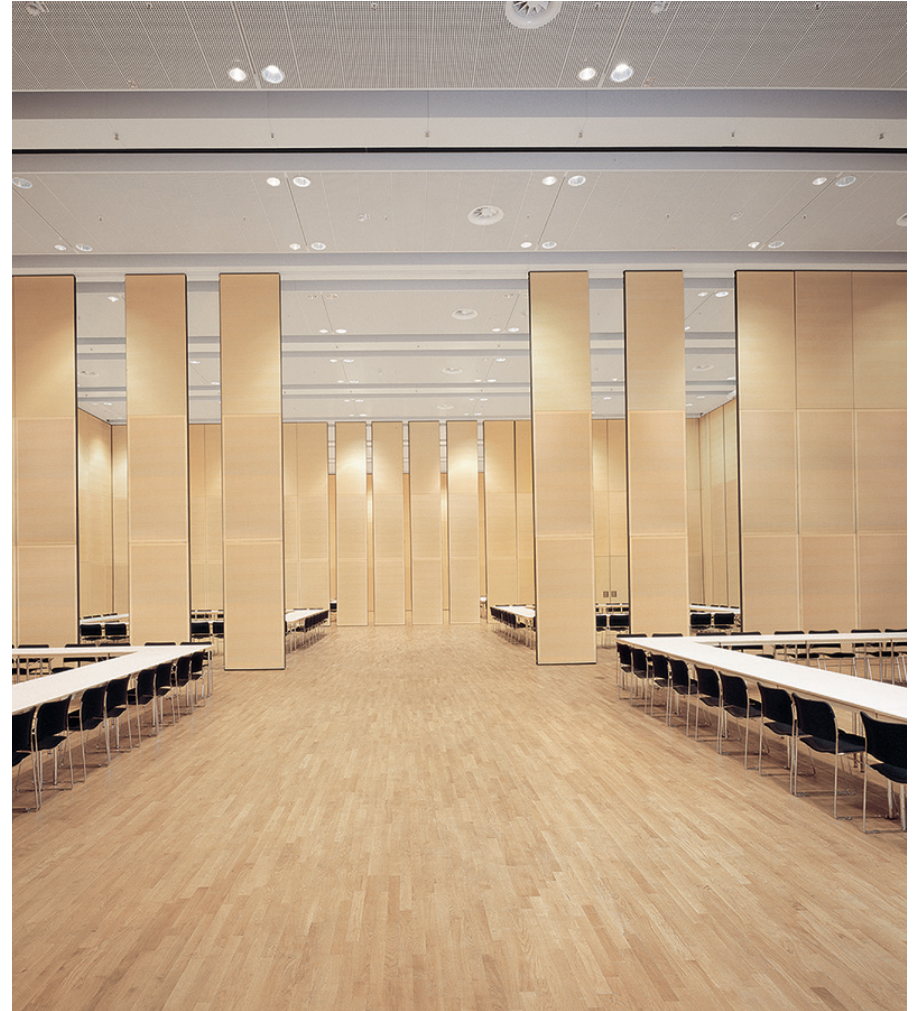
**OPERATION**

The sections are pushed manually into each other and locked individually with cremone bolts. Each panel is thereby fixed between the floor and the ceiling with rubber strips, which makes the wall tight and stable. The panel wall can also be supplied with semi-automatic closure or fully automatic control.

x

**THE SURFACE OF YOUR CHOICE**

The sections can either be spray painted in a colour of your choice or coated with other types of surfaces, for example, laminate, melamine or timber veneer, or special surfaces with sound-absorbent properties.



## TYPE SUMMARY

Product	Sound insulation (Rw)	Partition thickness (mm)	Weight (kg/m <sup>2</sup> )	Fire resistance (min)
DEKO MV 41	41 dB	85 <sup>4</sup>	26 <sup>4</sup>	-
DEKO MV 44	44 dB	85 <sup>4</sup>	30 <sup>4</sup>	-
DEKO MV 46	46 dB	85 <sup>4</sup>	35 <sup>4</sup>	-
DEKO MV 48	48 dB	85 <sup>4</sup>	40 <sup>4</sup>	-
DEKO MV 50	50 dB	85 <sup>4</sup>	42 <sup>4</sup>	-
DEKO MV 52	52 dB	100	52	-
DEKO MV 53	53 dB	100	54	-
DEKO MV EI 30	46 dB	100	54	EI 30 <sup>3</sup>
DEKO MV EI 60	50 dB	110	63	EI 60 <sup>3</sup>
DEKO MV 38 - Dorma Variflex <sup>1,2</sup>	38 dB	100	36	-
DEKO MV 41 - Dorma Variflex <sup>1,2</sup>	41 dB	88	23	-
DEKO MV 44 - Dorma Variflex <sup>1,2</sup>	44 dB	100	38	-
DEKO MV 46 - Dorma Variflex <sup>1,2</sup>	46 dB	88	24	-
DEKO MV 49 - Dorma Variflex <sup>1,2</sup>	49 dB	100	45	-
DEKO MV 52 - Dorma Variflex <sup>1,2</sup>	52 dB	100	52	-
DEKO MV 53 - Dorma Variflex <sup>1,2</sup>	53 dB	88	32	-
DEKO MV 55 - Dorma Variflex <sup>1,2</sup>	55 dB	100	52	-
DEKO MV 56 - Dorma Variflex <sup>1,2</sup>	56 dB	88	41	-
DEKO MV 57 - Dorma Variflex <sup>1,2</sup>	57 dB	100	59	-
DEKO MV 58 - Dorma Variflex <sup>1,2</sup>	58 dB	88	49	-
DEKO MV 58 - Dorma Variflex <sup>1</sup>	58 dB	120	54	-
DEKO MV 60 - Dorma Variflex <sup>1</sup>	60 dB	120	61	-
DEKO MV EI 30 - Dorma Variflex <sup>1</sup>	52 dB	100	48	EI 30 <sup>3</sup>
DEKO MV EI 30 - Dorma Variflex <sup>1</sup>	57 dB	100	71	EI 30 <sup>3</sup>

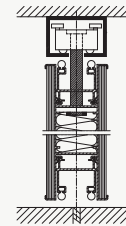
1) Can be supplied with semi-automatic closure.

2) Can be supplied with fully automatic control.

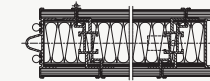
3) Fire test and fire classification according to applicable common European standards.

4) If folded edges are required on the panels, the thickness increases to 100mm and the weight to 10 kg/m<sup>2</sup>.

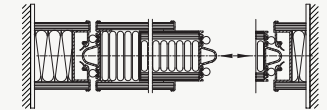
## DETAILS AND STACKING OPTIONS



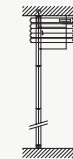
CEILING AND FLOOR CONNECTION



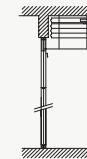
DOOR LEAF



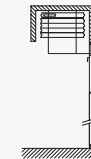
TELESCOPIC PANEL / WALL CONNECTION



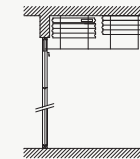
K1



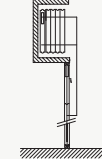
K3



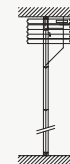
K4



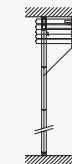
K5



K6



Z1



Z2



E1

For updated values and details, please visit [deko.com](http://deko.com)