

# DEKO DOORS with iGlass Easy-Switch



iGlass Easy-Switch can only be used on the inside of a double-glazed unit (DGU)

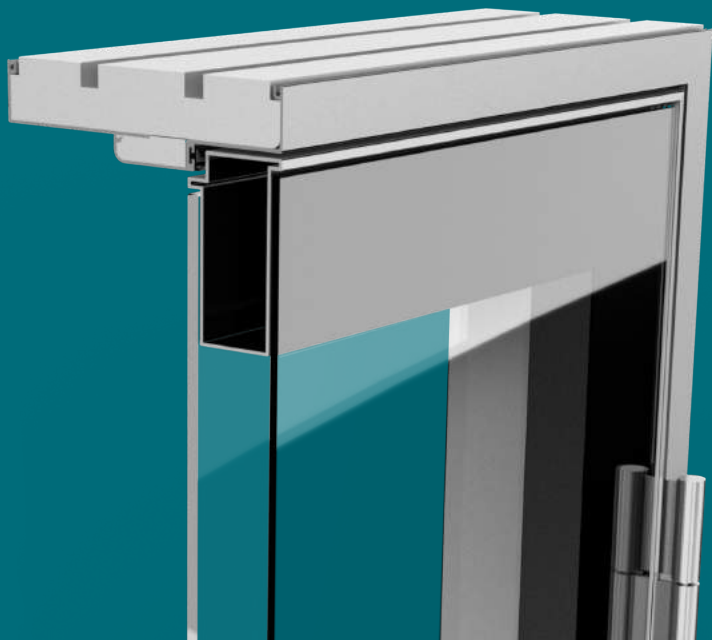
The film adheres to the surface of the pane and does not require lamination.



40 dB | 92-230mm thick | E1 60



## A unique and extensive door program



DEKO Doors with iGlass Easy-Switch is a double-glazed door which has revolutionised the switchable glass industry while still providing acoustic and visual privacy. iGlass Easy-Switch is protected within the confines of the DGU and can be replaced or removed without damaging the integrity of the glazing or the sleek profiles. iGlass Easy-Switch takes a milli-second to change from opaque to transparent and can be applied at an affordable price with minimal fuss.