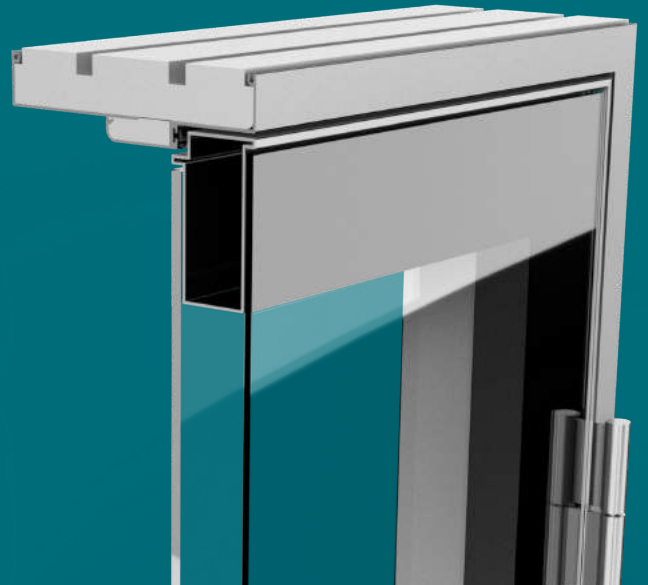


Double-glazed doors with acoustic AND visual privacy

DEKO DG Doors with iGlass Easy-Switch is a double-glazed edge-to-edge unit which takes advantage of DEKO's signature slimline design. This state-of-the-art design is unique to Australia and incorporates iGlass Easy-Switch, which transforms your doors from opaque to transparent within a millisecond. iGlass Easy-Switch is protected within the confines of the DGU and can be replaced or removed without damaging the integrity of the glazing or the sleek profiles.

40 dB | 92-230mm thick | E1 60



iGlass Easy-Switch can only be used on the interior of a double-glazed unit (DGU)

The film adheres to the surface of the pane and does not require lamination.

